

Research article

## The $\alpha_{1D}$ -adrenergic receptor is expressed intracellularly and coupled to increases in intracellular calcium and reactive oxygen species in human aortic smooth muscle cells

Mary L García-Cazarín<sup>†1</sup>, Jennifer L Smith<sup>†1</sup>, Kyle A Olszewski<sup>†2</sup>, Dan F McCune<sup>†2</sup>, Linda A Simmerman<sup>†1</sup>, Robert W Hadley<sup>1</sup>, Susan D Kraner<sup>†1</sup> and Michael T Piascik<sup>\*1</sup>

Address: <sup>1</sup>Department of Molecular and Biomedical Pharmacology, University of Kentucky; Lexington, KY USA and <sup>2</sup>The Nesbitt School of Pharmacy, Department of Pharmaceutical Sciences, Wilkes University; Wilkes, PA USA

Email: Mary L García-Cazarín - garciaml\_2000@yahoo.com; Jennifer L Smith - Jenny@uky.edu; Kyle A Olszewski - kyle.olszewski@wilkes.edu; Dan F McCune - Dan.McCune@wilkes.edu; Linda A Simmerman - lasimm0@uky.edu; Robert W Hadley - RHadley@uky.edu; Susan D Kraner - sdkran0@uky.edu; Michael T Piascik\* - mtp@uky.edu

\* Corresponding author †Equal contributors

Published: 27 February 2008

Received: 9 August 2007

*Journal of Molecular Signaling* 2008, 3:6 doi:10.1186/1750-2187-3-6

Accepted: 27 February 2008

This article is available from: <http://www.jmolecularsignaling.com/content/3/1/6>

© 2008 García-Cazarín et al; licensee BioMed Central Ltd.

This is an Open Access article distributed under the terms of the Creative Commons Attribution License (<http://creativecommons.org/licenses/by/2.0>), which permits unrestricted use, distribution, and reproduction in any medium, provided the original work is properly cited.

### Abstract

**Background:** The cellular localization of the  $\alpha_{1D}$ -adrenergic receptor ( $\alpha_{1D}$ -AR) is controversial. Studies in heterologous cell systems have shown that this receptor is expressed in intracellular compartments. Other studies show that dimerization with other ARs promotes the cell surface expression of the  $\alpha_{1D}$ -AR. To assess the cellular localization in vascular smooth muscle cells, we developed an adenoviral vector for the efficient expression of a GFP labeled  $\alpha_{1D}$ -AR. We also measured cellular localization with immunocytochemistry. Intracellular calcium levels, measurement of reactive oxygen species and contraction of the rat aorta were used as measures of functional activity.

**Results:** The adenovirally expressed  $\alpha_{1D}$ -AR was expressed in intracellular compartments in human aortic smooth muscle cells. The intracellular localization of the  $\alpha_{1D}$ -AR was also demonstrated with immunocytochemistry using an  $\alpha_{1D}$ -AR specific antibody. RT-PCR analysis detected mRNA transcripts corresponding to the  $\alpha_{1A}$ - $\alpha_{1B}$ - and  $\alpha_{1D}$ -ARs in these aortic smooth muscle cells. Therefore, the presence of the other  $\alpha_1$ -ARs, and the potential for dimerization with these receptors, does not alter the intracellular expression of the  $\alpha_{1D}$ -AR. Despite the predominant intracellular localization in vascular smooth muscle cells, the  $\alpha_{1D}$ -AR remained signaling competent and mediated the phenylephrine-induced increases in intracellular calcium. The  $\alpha_{1D}$ -AR also was coupled to the generation of reactive oxygen species in smooth muscle cells. There is evidence from heterologous systems that the  $\alpha_{1D}$ -AR heterodimerizes with the  $\beta_2$ -AR and that desensitization of the  $\beta_2$ -AR results in  $\alpha_{1D}$ -AR desensitization. In the rat aorta, desensitization of the  $\beta_2$ -AR had no effect on contractile responses mediated by the  $\alpha_{1D}$ -AR.

**Conclusion:** Our results suggest that the dimerization of the  $\alpha_{1D}$ -AR with other ARs does not alter the cellular expression or functional response characteristics of the  $\alpha_{1D}$ -AR.

## Background

The  $\alpha_1$ -ARs are members of the class I of the G-protein coupled receptors (GPCR) superfamily [1,2]. Three  $\alpha_1$ -ARs,  $\alpha_{1A}$ -AR,  $\alpha_{1B}$ -AR and  $\alpha_{1D}$ -AR have been cloned and characterized [1,3,4]. These receptors mediate responses to epinephrine and norepinephrine thus making a vital contribution to the control of blood flow and systemic arterial blood pressure. Abnormalities in the regulation of the  $\alpha_1$ -ARs may contribute to the development of hypertension and heart failure [5-8].

It is well known that the localization and trafficking properties of a receptor can modulate its physiological function [9]. Results from heterologous expression systems have demonstrated that the  $\alpha_{1B}$ -AR is localized on the cell surface, as expected for a GPCR, while the  $\alpha_{1A}$ -AR is localized not only on the cell but also in intracellular compartments [10,11]. In contrast, we have shown that the  $\alpha_{1D}$ -AR is localized intracellularly [11,12]. These results of nonconical cellular localization are consistent with emerging data that show specific GPCR families can be localized not only to intracellular sites but also on the nuclear membrane [13].

In recent years, the concept of receptor dimerization has brought a new perspective to GPCR function [14-16]. Previous studies reported that the  $\alpha_{1D}$ -AR interacts with the  $\alpha$ -AR interacts with the  $\alpha_{1B}$ -AR and the  $\beta_2$ -AR [17] resulting in the cell surface expression of the  $\alpha_{1D}$ -AR. This has led to the suggestion that these receptors are capable of heterodimerization [17-20]. These observations have been made in heterologous systems. However, the role of dimerization in the regulation of cells that natively express all three receptors such as vascular smooth muscle cells has not been well studied. This is due in part to the difficulty of transfecting smooth muscle cells. To overcome this obstacle, we developed a recombinant adenovirus for the efficient expression of the human  $\alpha_{1D}$ -AR. We show that despite the presence of the other  $\alpha_1$ -AR family members, the  $\alpha_{1D}$ -AR is expressed mainly in intracellular compartments. We further show that while receptor dimerization may occur, it does not appear to alter the functional properties of the  $\alpha_{1D}$ -AR.

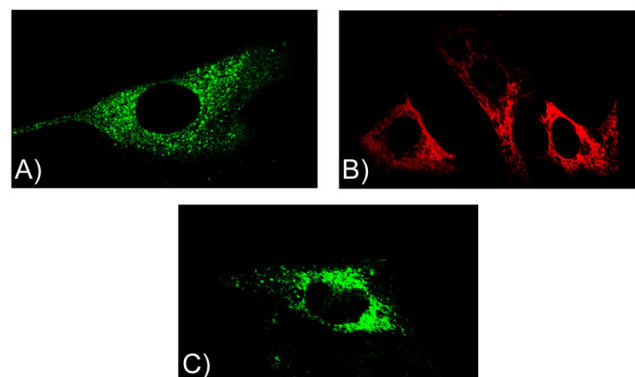
## Results

### Cellular localization

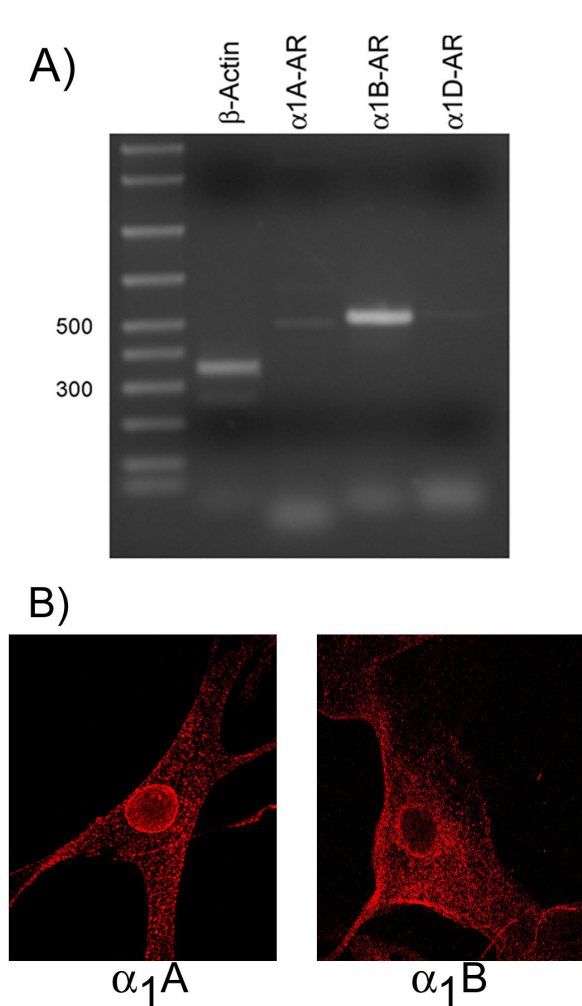
An adenoviral vector was constructed to drive the efficient expression of a GFP-labeled  $\alpha_{1D}$ -AR. Infection of aortic smooth muscle cells with virus expressing the  $\alpha_{1D}$ -AR/GFP resulted in approximately 80% receptor transfectional efficiency (not shown) demonstrating that adenovirus can be useful in cells that have been traditionally difficult to transfect with the  $\alpha_1$ -ARs. Following viral infection, the  $\alpha_{1D}$ -AR/GFP was detected in intracellular compartments of aortic smooth muscle cells (Figure 1A). A

similar pattern of vascular smooth muscle intracellular expression was seen with immunocytochemistry studies using an  $\alpha_{1D}$ -AR selective antibody (Figure 1B). These localization results in smooth muscle cells are similar to our previous findings in HEK 293 cells transfected with an  $\alpha_{1D}$ -AR/GFP expression plasmid or immunohistochemistry studies in fibroblasts stably transfected with the  $\alpha_{1D}$ -AR [12,21]. Recently, it was proposed that the  $\alpha_{1D}$ -AR can dimerize with the  $\alpha$ -AR can dimerize with the  $\alpha_{1B}$ -AR promoting its cell surface expression [19]. Our results would argue that the presence of other ARs, particularly the  $\alpha_{1B}$ -AR, does not alter  $\alpha_{1D}$ -AR localization in vascular smooth muscle cells. To further substantiate that the presence of the  $\alpha_{1B}$ -AR does not affect  $\alpha_{1D}$ -AR localization, we infected fibroblasts that stably express the  $\alpha_{1B}$ -AR with the  $\alpha$ -AR with the  $\alpha$ -AR with the  $\alpha_{1D}$ -AR/GFP adenoviral construct (Figure 1C). Despite expression in a cell expressing the  $\alpha_{1B}$ -AR at high levels,  $\alpha_{1D}$ -AR was nonetheless expressed in intracellular compartments (Figure 1C). These data argue that the  $\alpha_{1B}$ -AR does not alter the cellular localization of the  $\alpha_{1D}$ -AR.

It is possible, however, that in these cultured smooth muscle cells the  $\alpha_{1B}$ -AR and/or  $\alpha_{1A}$ -AR are not expressed. To examine this possibility we used RT-PCR to assess message expression. The results of these experiments are shown in figure 2A. A very prominent PCR-product corresponding to the  $\alpha_{1B}$ -AR was detected in aortic smooth muscle cells. We were also able to detect an  $\alpha_{1A}$ -AR transcript. A very faint product corresponding to the  $\alpha$ -AR

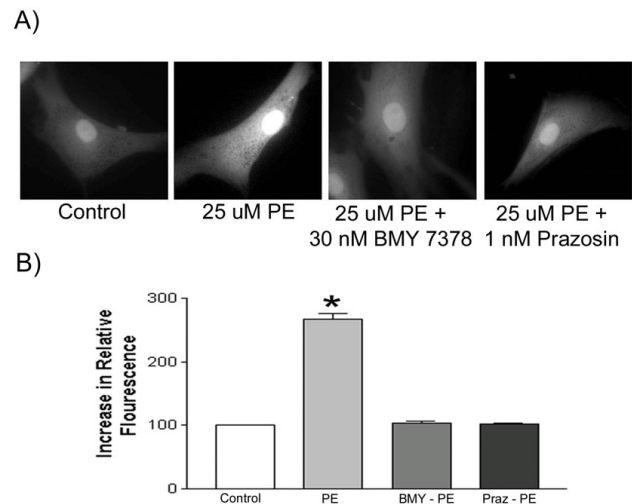


**Figure 1**  
**The Cellular Localization of the  $\alpha_{1D}$ -AR in Human Aortic Smooth Muscle Cells.** Panel A; Human aortic smooth muscle cells were infected with an  $\alpha_{1D}$ -AR/GFP expressing virus. Panel B; Immunofluorescence localization of the  $\alpha_{1D}$ -AR in human aortic smooth muscle cells. Panel C; Rat 1 Fibroblasts were infected with an  $\alpha_{1D}$ -AR/GFP expressing virus. Adenoviral infection and immunostaining were carried out as described in Methods. Localization patterns were visualized with laser scanning confocal microscopy.



**Figure 2**  
**Panel A;** RT-PCR Measurement of  $\alpha_1$ -AR mRNA in Human Aortic Smooth Muscle cells. **Panel B;** Immunolocalization of the  $\alpha_1$ -ARs in human aortic smooth muscle cells. Reverse transcription and PCR analysis and immunocytochemistry were performed as described in Methods.

transcript. A very faint product corresponding to the  $\alpha_{1D}$ -AR was also observed. Minute levels of tissue expression are typical for this receptor. A series of antibodies directed against each of the  $\alpha_1$ -ARs was used to determine the cellular localization of these receptors (Figure 2B). As has been shown by previous work the  $\alpha$ . As has been shown by previous work the  $\alpha_{1A}$ -AR is expressed both intracellularly as well as on the cell surface while the  $\alpha_{1B}$ -AR is expressed predominately on the cell membrane. What is also apparent from comparing figures 1A-C and figure 2B is that the expression pattern of the  $\alpha$  is that the expression pattern of the  $\alpha_{1D}$ -AR is markedly different from that of either the  $\alpha$ -AR is markedly different from that of either the  $\alpha_{1A}$ - or  $\alpha$ - or  $\alpha_{1B}$ -ARs. Therefore, in a mammalian cell



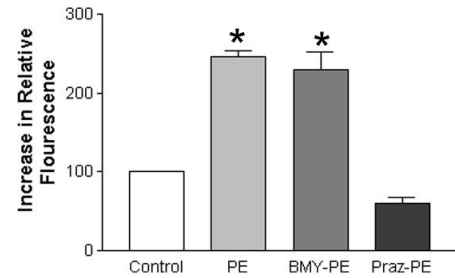
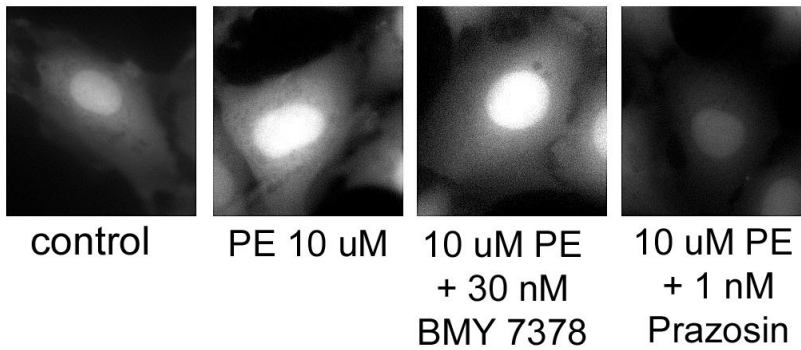
**Figure 3**  
**Effect of Phenylephrine on Intracellular Calcium Levels in Human Aortic Smooth Muscle Cells.** Human aortic smooth muscle cells were loaded with Calcium Green 1 AM for 1 hr. The ability of 25  $\mu$ M phenylephrine to increase intracellular calcium was studied alone and following treatment with either 1 nM prazosin or 30 nM BMY 7378. Experiments were carried out as described in Methods. The results of a typical imaging study are presented along with a graphical summary of the statistical analysis of four independent experiments. Data were analyzed by a one-way ANOVA followed by post hoc testing. \* Indicates a statistically significant difference from the untreated control.

where both the  $\alpha_{1A}$ - and  $\alpha$ - and  $\alpha_{1B}$ -AR are natively expressed (as opposed to being transfected) the  $\alpha_{1D}$ -AR is nonetheless expressed intracellularly. Further, the data argue that while dimerization may occur in smooth muscle cells, it does not alter the localization of the  $\alpha_{1D}$ -AR.

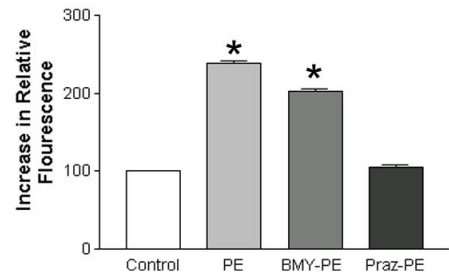
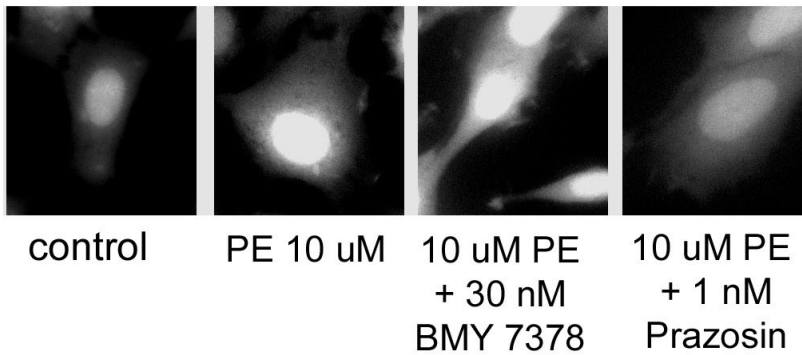
#### Effects on intracellular calcium

In aortic smooth muscle cells phenylephrine produced a dose-dependent and statistically significant increase in intracellular calcium (see data for 25  $\mu$ M presented in Figure 3). This increase was antagonized by 1 nM of the non-selective  $\alpha_1$ -AR blocker prazosin or 30 nM of the highly selective  $\alpha_{1D}$ -AR antagonist BMY 7378. To substantiate the selectivity of this dose of BMY 7378 we measured phenylephrine-induced increases in intracellular calcium levels in fibroblasts stably transfected with either the  $\alpha_{1A}$ -AR,  $\alpha_{1B}$ -AR or the  $\alpha_{1D}$ -AR. Despite pretreatment with 30 nM BMY 7378, phenylephrine maintained the ability to promote increases in intracellular calcium in the  $\alpha_{1A}$ -AR or  $\alpha_{1B}$ -AR expressing lines of fibroblasts (Figure 4). In contrast, BMY 7378 blocked the phenylephrine-induced increases in intracellular calcium in fibroblasts stably transfected with the  $\alpha_{1D}$ -AR (Figure 4). Therefore, BMY 7378 at 30 nM, the concentration used in the vascular

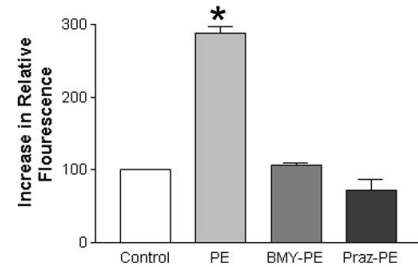
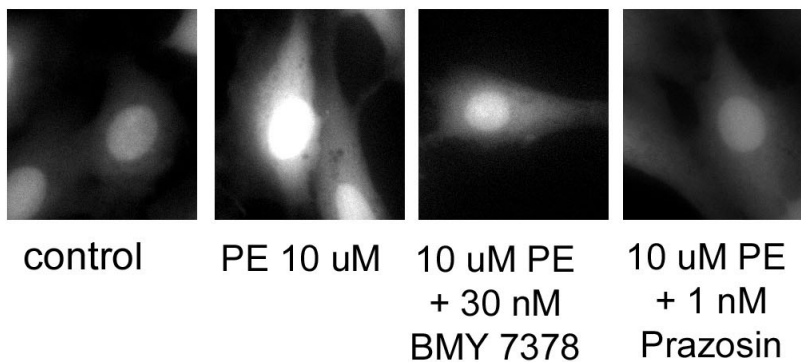
A) Fibroblasts expressing the  $\alpha_{1A}$ -AR



B) Fibroblasts expressing the  $\alpha_{1B}$ -AR



C) Fibroblasts expressing the  $\alpha_{1D}$ -AR



**Figure 4**

**Effect of Phenylephrine on Intracellular Calcium Levels in Stably Transfected Rat I Fibroblasts.** Rat I Fibroblasts, stably transfected with each of the  $\alpha_1$ -ARs, were loaded with Calcium Green 1 AM for 1 hr. The ability of 10  $\mu$ M phenylephrine to increase intracellular calcium was studied alone and following treatment with either 1 nM prazosin or 30 nM BMY 7378. Experiments were carried out as described in Methods. The results of a typical imaging study are presented along with a graphical summary of the statistical analysis of four independent experiments. Data were analyzed by a one-way ANOVA followed by post hoc testing. \* Indicates a statistically significant difference from the untreated control.

smooth muscle cells (see above), can selectively block the  $\alpha_{1D}$ -AR. These data support the conclusion that the receptor that mediates increases in intracellular calcium in aortic smooth muscle cells is the  $\alpha_{1D}$ -AR.

#### Effects on reactive oxygen species

This type of specificity of coupling was also observed using a novel functional response to activation of the  $\alpha_1$ -AR—namely the generation of reactive oxygen species. In human aortic smooth muscle cells, phenylephrine produced a rapid, dose-dependent and statistically significant increase in the level reactive oxygen species (Figure 5). While we present the data with 10  $\mu$ M, we could see statistically significant increases in ROS at 1  $\mu$ M phenylephrine. This increase was blocked by 1 nM prazosin or 30 nM BMY 7378. Therefore, it is the  $\alpha_{1D}$ -AR that mediates increases in reactive oxygen species in these vascular smooth muscle cells.

#### Effects on smooth muscle contraction

Recent data from heterologous systems have suggested that the interaction between the  $\alpha_{1D}$ -AR and other G-protein coupled receptors alters the pharmacologic properties of the  $\alpha_{1D}$ -AR [17,19]. Our results from vascular smooth

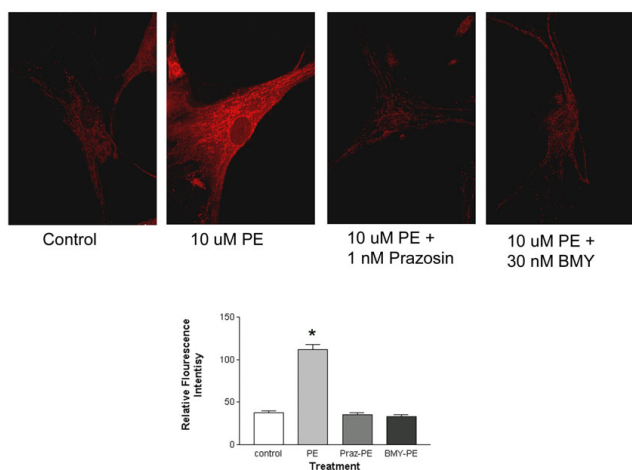
muscle cells that naturally express all three receptors indicate that functional responses from a receptor with  $\alpha_{1D}$ -AR characteristics can be detected.

To assess the relevance of the interaction between the  $\alpha_{1D}$ -AR and the other ARs in an intact blood vessel system, we studied contractile responses in the rat aorta. In previous work we have shown that the contractions of the rat aorta are mediated by the  $\alpha_{1D}$ -AR [22]. In addition to potential dimerization among the  $\alpha_1$ -ARs, there is evidence of heterodimerization between the  $\alpha_{1D}$ -AR and  $\beta_2$ -AR. Studies in heterologous systems also show that desensitization of the  $\beta_2$ -AR with albuterol promotes the internalization and desensitization of the  $\alpha_{1D}$ -AR [17]. We assessed responses in the rat aorta following a 12 hr exposure to albuterol. After this incubation period, the responses to albuterol were significantly decreased when compared to vehicle treated aorta (Figure 6). This indicates a desensitization of the  $\beta_2$ -AR mediated response. The phenylephrine log dose response curves were the same in control and albuterol desensitized aorta. Therefore, desensitization of  $\beta_2$ -AR does not lead to desensitization of the  $\alpha_{1D}$ -AR.

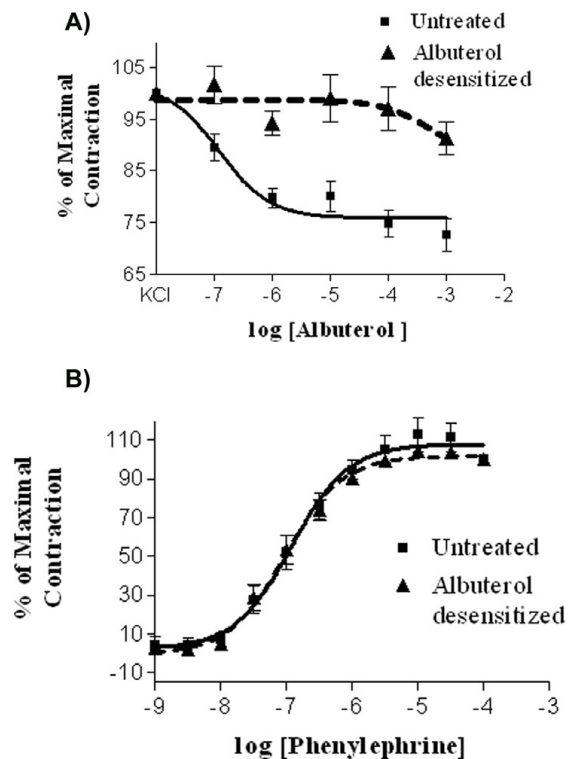
#### Discussion

Previous work from our laboratory has shown that in heterologous systems the  $\alpha_{1D}$ -AR localizes intracellularly and does not undergo agonist-mediated internalization or desensitization [11,12,21]. Due in part to problems with transfection, it has been difficult to determine if this type of expression pattern occurs in cells that natively express the  $\alpha_{1D}$ -AR along with the other  $\alpha_1$ -AR family members. To facilitate its efficient expression, we developed an adenoviral vector expressing the human  $\alpha_{1D}$ -AR fused with the GFP. We then used the vector to infect human aortic smooth muscle cells. RT-PCR analysis showed that these cells express all three  $\alpha_1$ -ARs (Figure 2). The rank order of mRNA expression was  $\alpha_{1B}$ -AR >  $\alpha_{1A}$ -AR >  $\alpha_{1D}$ -AR. This type of expression pattern is typical for the  $\alpha_1$ -ARs. Following infection of aortic smooth muscle cells we observed that the  $\alpha_{1D}$ -AR was localized to intracellular compartments (Figure 1A). An intracellular localization pattern was also observed when aortic smooth muscle cells were immunostained with an  $\alpha_{1D}$ -AR antibody (Figure 1B). Therefore, while dimerization between the  $\alpha_{1D}$ -AR and the other  $\alpha_1$ -ARs may occur in aortic smooth muscle cells, this does not alter the cellular localization of the  $\alpha_{1D}$ -AR.

If the  $\alpha_{1D}$ -AR forms heterodimers with the other  $\alpha_1$ -ARs, then it is possible that these complexes exhibit properties different from the  $\alpha_{1D}$ -AR alone [17,19]. We examined this possibility using the selective antagonist BMY 7378. In previous work we calculated that at 30 nM over 90 % of the  $\alpha_{1D}$ -ARs would be occupied by BMY 7378 while less than 10 % of either the  $\alpha_{1A}$ -AR or the  $\alpha_{1B}$ -AR would be



**Figure 5**  
**Effect of Phenylephrine on the Levels of Reactive Oxygen Species Levels in Human Aortic Smooth Muscle Cells.** Human aortic smooth muscle cells were loaded with Mitotracker ROS for 20 min. The ability of 10  $\mu$ M phenylephrine to increase the levels of reactive oxygen species was studied alone and following treatment with either 1 nM prazosin or 30 nM BMY 7378. Experiments were carried out as described in Methods. The results of a typical imaging study are presented along with a graphical summary of the statistical analysis of four independent experiments. Data were analyzed by a one-way ANOVA followed by post hoc testing. \* Indicates a statistically significant difference from the untreated control.



**Figure 6**  
**Effect of the Albuterol Pretreatment of Phenylephrine-Induced Contraction of the Rat Aorta.** Panel A; Log-dose response curves of the ability of albuterol to relax the rat aorta. The aorta was contracted with KCl and the albuterol responses were assessed in control blood vessels and in those vessels desensitized by incubation with 1  $\mu$ M albuterol for 12 hr. Data are the mean  $\pm$  the SEM of 10 (control) or 13 (desensitized) experiments. Panel B; Log-dose response curves for the ability of phenylephrine to induce contraction of the aorta following desensitization with albuterol. Data are the mean  $\pm$  the SEM of 6 independent experiments.

occupied by this antagonist [22]. Therefore, at this concentration BMY 7378 would be anticipated to be highly selective for the  $\alpha_{1D}$ -AR. This was substantiated in fibroblasts stably transfected with each of the  $\alpha_1$ -ARs. In these fibroblast cell lines phenylephrine treatment produced a significant increase in intracellular calcium. However, only in fibroblasts expressing the  $\alpha_{1D}$ -AR was BMY 7378 capable of antagonizing the calcium response to phenylephrine, indicating that BMY 7378 is selective for the  $\alpha_{1D}$ -AR (Figure 4). The phenylephrine-mediated increases in intracellular calcium in aortic smooth muscle cells were also blocked by this dose of BMY 7378 (Figure 3). In a similar fashion, we demonstrated that the generation of

reactive oxygen species in aortic smooth muscle cells was antagonized by 30 nM BMY 7378 (Figure 5). There is no evidence that BMY 7378 at this concentration can block either the  $\alpha_{1A}$ - or the  $\alpha_{1B}$ -AR. Therefore the antagonism seen with BMY 7378 indicates that the observed increases in intracellular calcium and reactive oxygen species are mediated by a receptor of  $\alpha_{1D}$ -AR character. In aggregate, the data suggest that while heterodimerization may occur, it does not appear to alter the pharmacologic properties of the  $\alpha_{1D}$ -AR. We know that both increases in intracellular calcium and elevations in ROS are mediated by the  $\alpha_{1D}$ -AR. What we do not know is if the intracellularly expressed  $\alpha_{1D}$ -AR is signaling competent and responsible for these effects or whether it is a small population of cell surface expressed receptors. If signaling does indeed emanate from the intracellular  $\alpha_{1D}$ -AR, then there has to be a pathway that would allow agonist access to these receptors.

In addition to dimerization within the  $\alpha_1$ -AR family, there is also evidence that the  $\alpha_{1D}$ -AR can form dimers with the  $\beta_2$ -AR. Studies in expression systems have shown that not only does the  $\beta_2$ -AR promote the cell surface expression of the  $\alpha_{1D}$ -AR but that desensitization of the  $\beta_2$ -AR also desensitized the  $\alpha_{1D}$ -AR response. We wished to determine if this type of activity could be obtained in a functional system that natively expresses these receptors without resorting to overexpression of cloned receptors in a model cell system. The contractile responses of phenylephrine in the rat aorta are due to interactions at the  $\alpha_{1D}$ -AR (see for example, Piascik et al. [22]). Therefore, we assessed potential  $\beta_2$ -AR/ $\alpha_{1D}$ -AR interactions using this blood vessel. Overnight treatment of blood vessels with albuterol caused desensitization of the  $\beta_2$ -AR as shown by diminished vasodilatory responses to this agent (Figure 6A). However, desensitization of the  $\beta_2$ -AR did not cause a rightward shift of the phenylephrine dose response curve (see Figure 6B). Therefore, desensitization of the  $\beta_2$ -AR does not alter contractile responses to the  $\alpha_{1D}$ -AR. These results show that cross desensitization between  $\beta_2$ -AR and the  $\alpha_{1D}$ -AR does not occur in an intact, responding segment of vascular smooth muscle.

## Conclusion

In summary, adenoviral vectors expressing the  $\alpha_1$ -ARs are a novel and efficient tool to investigate properties of these receptors in native cells. These vectors were used to show that in human smooth muscle cells expressing all three  $\alpha_1$ -ARs, the  $\alpha_{1D}$ -AR is localized in intracellular compartments. Therefore, despite recent reports of heterodimerization between the  $\alpha_1$ -ARs, in a human vascular smooth muscle cell line, the  $\alpha_{1D}$ -AR is still expressed intracellularly. Indeed none of the data we obtained in this work support the idea of  $\alpha_{1D}$ -AR heterodimerization. Using three independent measures (calcium levels, generation

of reactive oxygen or vascular smooth muscle contraction) we also could not detect any evidence of altered pharmacologic properties of the  $\alpha_{1D}$ -AR.

## Methods

### Cell culture conditions

Human aortic smooth muscle cells were obtained from Cascade Biologics (Portland, OR) and grown in Medium 231 supplemented with smooth muscle growth supplement until they become confluent (Cascade Biologics, Portland, OR). Stably transfected Rat 1 fibroblast lines expressing each of the  $\alpha_1$ -AR subtypes were maintained in Dulbecco's modified Eagle's medium (Cellgro, Herndon, VA) supplemented with 10% fetal bovine serum and a 1% antibiotic/antimycotic cocktail (Invitrogen, Carlsbad, CA). All cells were grown in T75 flasks in a 37°C cell culture incubator with a humidified atmosphere (95% air and 5% CO<sub>2</sub>) and were fed every 2 to 3 days. After reaching confluence the cells were plated on plain untreated coverslips in 35 mm tissue culture dishes.

### Construction of recombinant adenoviruses expressing the $\alpha_1$ -ARs

A vector expressing the human  $\alpha_{1D}$ -AR coupled to the green fluorescent protein ( $\alpha_{1D}$ -AR/GFP) was provided by Dr. Gozoh Tsujimoto [23,24]. This vector was digested with *EcoRI* and *XbaI* enzymes and cloned into the pCI expression vector (Promega, Madison, WI). pCI was digested with *BglII* and *Clal*. This fragment included the CMV I.E. promoter, the  $\alpha_{1D}$ -AR/GFP and the SV40 late poly (A). The *BglII* and *Clal* fragment was cloned into the adenovirus recombination vector pAdLink. pAdLink and the wild type adenovirus vector, dl327, were linearized with *NheI* and *Clal* respectively. Homologous recombination occurred by co-transfecting linearized pAdLink and the wild type adenovirus vector into HEK 293 cells. Positive plaques appeared 10 to 14 days after recombination and were then amplified. Plaques were purified by serial dilutions of a positive plaque (usually from 10<sup>-3</sup> to 10<sup>-12</sup>) in 96 well plates using HEK 293 cells. After plaque purification, samples of viral DNA were analyzed for wild type virus contamination by PCR [25]. Once a purified adenovirus was obtained, the plaque was amplified for large-scale production. Fifty 150 mm dishes of HEK 293 cells were used for amplification of adenovirus which was then purified using double cesium gradients. Adenovirus was tittered using the Adeno-X™ Rapid Titer Kit from BD Biosciences (Palo Alto, CA).

### Infection of cells with recombinant adenovirus

Human aortic smooth muscle cells or Rat 1 fibroblasts were grown on glass coverslips. Two hours prior to infection, cells were placed in serum free medium and infected with adenovirus. Twenty four hours after infection the medium was changed and the virus free incubation was allowed to

proceed for an additional 24 hours. Cells expressing the GFP labeled  $\alpha_{1D}$ -AR were fixed with 3.7% Formaldehyde in PBS for 10 mins. Cells were then mounted on slides with Vectashield (Vector Labs, Burlingame, CA). Cells were visualized using a Leica TCS SP 5 AOBs confocal microscope with a Plan-Apo 64X oil immersion objective lens (Leica, Wetzlar, Germany) using Leica TCS NT version 2.5 software. Images were transferred to a computer for reduction with Adobe Photoshop version 6.0 (Adobe Systems, Mountain View, CA).

### Immunocytochemistry

Human aortic smooth muscle cells or grown on glass cover slips, were washed in PBS and fixed with 3.7% Formaldehyde in PBS for 10 min. Cells were then washed with .05% BSA in PBS and permeabilized with 0.1% Triton in PBS for 5 min. After permeabilization, the cells were washed and blocked with 10% lamb serum for 1 hour at room temperature. After washing polyclonal antibodies (Affinity Bioreagents, Golden, CO) against each of the  $\alpha_1$ -ARs, diluted 1:100 in 1% BSA in PBS, was added and incubated overnight at 4°C. Following this incubation, the cells were washed with .05% BSA in PBS and a Texas Red secondary antibody (Abcam, Cambridge MA), diluted 1:500 in PBS, was added and incubated in the dark at room temperature for 1 hr. Cells were washed with PBS and mounted on glass slides with Vectashield (Vector Laboratories, Burlingame, CA). Cells were visualized with a confocal microscope as described above.

### RT-PCR

Total RNA from HASMCs was isolated and purified with the ChargeSwitch Total RNA kit from Invitrogen (Carlsbad, CA), and 0.5 µg samples were reverse transcribed at 45°C for one hour using Cloned Avian Myeloblastosis Virus (AMV) Reverse Transcriptase and Oligo(dT)<sub>20</sub> primer (Invitrogen, Carlsbad, CA). After heating at 85°C for 5 min. to terminate the reaction, cDNA samples were stored at -20°C until used. Negative controls for the presence of genomic DNA were performed by replacing the reverse transcriptase enzyme with *Taq* DNA polymerase.

For PCR, primers were synthesized by Invitrogen based on those used by Esbenshade *et al.* [26] to detect and distinguish specific human AR subtypes. Sequences of the primers were as follows:  $\alpha_{1A}$ , 5'-ATGCTCCAGCCAAGAGTTCA-3' (sense, annealing to bases 1417-1437) and 5'-TCCAA-GAAGAGCTGGCCTTC-3' (antisense, bases 1898-1918);  $\alpha_{1B}$ , 5'-CTGTGCGCCATCTCCATCGATCGCTAC-3' (sense, bases 406-432) and 5'-ATGAAGAAGGG-TAGCCAGCACAAGATGAA-3' (antisense, bases 907-935);  $\alpha_{1D}$ , 5'-CTCTGCACCATCTCCGTGGACCGGTAC-3' (sense, bases 563-589) and 5'-AAAGAAGAAAGGGAAC-CAGCAGAGCACGAA-3' (antisense, bases 1073-1102).

The receptor specific primers target sequences within the third intracellular loop (sense) and the carboxy terminus (antisense). Primers for  $\beta$ -actin were included as a positive control (RT-PCR Primer and Control Set, Invitrogen). The predicted sizes of the amplified human  $\beta$ -actin,  $\alpha_{1A}$ -,  $\alpha_{1B}$ -, and  $\alpha_{1D}$ -AR PCR products were 353, 502, 530, and 540 bp, respectively.

PCR was carried out with Platinum *Taq* DNA polymerase (Invitrogen) in a PCR Express (Hybaid Ltd., United Kingdom) thermal cycler. The amplification reactions, repeated for 35 cycles, consisted of denaturation at 94 °C for 1 minute, annealing at 55 °C for 30 seconds, and extension at 72 °C for 1 minute. PCR products were run on a 1.4% agarose gel.

#### **Determination of intracellular calcium**

Human aortic smooth muscle cells were loaded for 1 hour with 5: M Calcium Green™ 1 AM (Molecular Probes, Eugene, OR). In certain experiments, Rat 1 fibroblasts were also loaded with the Calcium Green. Cells were then washed twice with serum containing medium and visualized with an inverted microscope with a Xe arc lamp with a Plan-Apo 60X oil immersion objective and an excitation filter of 480/15 nm and an emission filter of 535/20 nm. Images were taken using a CoolSnap HQ camera. Indicator dye-loaded cells underwent several drug treatments. Human aortic smooth muscle cells were pre-treated with vehicle, 1 nM prazosin or 30 nM BMY 7378 for 20 minutes, followed by 25 :M phenylephrine. Stably transfected fibroblasts were challenged with 10 :M phenylephrine. A higher phenylephrine concentration was required in smooth muscle to observe an equivalent increase in the calcium signal. Images from calcium measurements were processed using Metamorph software (Molecular Devices, Sunnyvale, CA). In the analysis, the nucleus was masked leaving the cytoplasm. The mean intensity of the cytoplasm was then taken for each cell. Images were prepared using Adobe Photoshop version 6.0 (Adobe Systems, Mountain View, CA). Imaging data were analyzed by one-way analysis of variance with Tukey's post-hoc test using GraphPad Prism version 3.00 for Windows (GraphPad Software, San Diego, CA). In all figures, the data are expressed as the mean and standard error of the mean (S.E.). A value of  $P < 0.05$  was considered statistically significant.

#### **Reactive oxygen species**

The generation of reactive oxygen species was measured using Mitotracker ROS (Invitrogen, Carlsbad, CA) diluted in DMSO. Human aortic smooth muscle cells, attached to glass coverslips, were incubated for 20 min at 37° with 5 nM Mitotracker ROS diluted in Serum Free Medium. Cells were washed twice with medium and fresh medium

applied. After this time 10  $\mu$ M phenylephrine was added and incubated with the cells for 20 min. Preliminary studies established this time as that optimal to record a significant increase in ROS levels. In certain experiments, cells were pretreated with 1 nM prazosin or 30 nM BMY 7378 prior to the addition of phenylephrine. After agonist incubation, the cells were fixed with 1.0% formaldehyde in PBS for 10 min and washed with PBS. Cells were mounted on slides with Vectashield (Vector Laboratories, Burlingame, CA). Cells were imaged by confocal microscopy as described above. Images were processed using Metamorph software (Molecular Devices, Sunnyvale, CA). Images were prepared using Adobe Photoshop version 6.0 (Adobe Systems, Mountain View, CA). Imaging data were analyzed by one-way analysis of variance with Tukey's post-hoc test using GraphPad Prism version 3.00 for Windows (GraphPad Software, San Diego, CA). In all figures, the data are expressed as the mean and standard error of the mean (S.E.). A value of  $P < 0.05$  was considered statistically significant.

#### **Assessment of aortic contractile function**

All animal protocols were reviewed and approved by the University of Kentucky Institutional Animal Care and Use Committee. Isolated blood vessels were prepared by techniques routinely used in our laboratory [21,22,27,28]. Aorta were removed from male Sprague-Dawley rats, cleaned of adventitia and extraneous tissue and then segmented into 1–2 mm rings. Following isolation, aortic rings were placed in a 37EC cell culture incubator and treated for 12 hr with 1 :M albuterol, a selective  $\beta_2$ -AR agonist or a vehicle control. After this period, rings were placed in the tissue baths for the assessment of contractile activity. The water-jacketed muscle baths were filled with physiologic saline solution maintained at 37 °C with constant oxygenation (95% O<sub>2</sub>, 5% CO<sub>2</sub>, pH 7.4) and under a passive force of 2.0 grams. Previous studies have shown that this passive force gives optimal responses. Aortic rings were contracted with 25 mM KCl and the ability of increasing amounts of albuterol to induce aortic relaxation was measured. Phenylephrine-dose response curves were also generated in a separate set of aortic rings treated with albuterol. Changes in the force generation were recorded using force displacement transducers (Astro-Med, Inc., Grass Instruments, West Warwick, RI) interfaced to a Dell computer. Data were retrieved using PolyVIEW version 2.5 and analyzed using GraphPad Prism version 3.00 for Windows (GraphPad Software, San Diego, CA).

#### **Abbreviations**

AR: Adrenergic receptor; GPCR: G-Protein-Coupled Receptor; HASMC: Human aortic smooth muscle cell; GFP: Green fluorescent protein.



## Authors' contributions

MLG performed or assisted in many of the studies in the manuscript. Specifically, figures 1, 3, 4 and 6. Also, wrote the manuscript. JLS maintained cell culture, performed or assisted in studies reported in figures 1, 3, 4, 5. Edited the manuscript and performed statistical analysis. KAO performed the PCR analysis in figure 2. DFM supervised the PCR studies in figure 2. LAS assisted in calcium studies in figures 3 and 4. RWH supervised calcium imaging studies in figures 3 and 4. SDK supervised preparation and purification of adenoviral vectors. MTP supervised MLG and JLS and is senior author. Edited manuscript and oversaw all aspects of this work. All Authors read and approve of this work.

## Acknowledgements

Funding for Study: HL-38120-14

MTP, MLG, JLS, KAO and DFM: HL-38120-14

SDK: AR46477

RWH and LAS: Natl Heart Lung and Blood Institute: 2 R01 HL056910-5A1

For manuscript: HL-38120-14

## References

- Cotecchia S, Schwinn DA, Randall RR, Lefkowitz RJ, Caron MG, Kobilka BK: **Molecular cloning and expression of the cDNA for the hamster alpha 1-adrenergic receptor.** *Proc Natl Acad Sci USA* 1988, **85**:7159-7163.
- Langer SZ: **History and nomenclature of alpha1-adrenoceptors.** *Eur Urol* 1999, **36**(Suppl 1):2-6.
- Schwinn DA, Cotecchia S, Lorenz W, Caron MG, Lefkowitz RJ: **The alpha 1C-adrenergic receptor: a new member in the alpha 1-adrenergic receptor family.** *Trans Assoc Am Physicians* 1990, **103**:112-118.
- Perez DM, Piascik MT, Graham RM: **Solution-phase library screening for the identification of rare clones: isolation of an alpha 1D-adrenergic receptor cDNA.** *Mol Pharmacol* 1991, **40**:876-883.
- Minneman KP, Esbenshade TA: **Alpha 1-adrenergic receptor subtypes.** *Annu Rev Pharmacol Toxicol* 1994, **34**:117-133.
- Piascik MT, Soltis EE, Piascik MM, Macmillan LB: **Alpha-adrenoceptors and vascular regulation: molecular, pharmacologic and clinical correlates.** *Pharmacol Ther* 1996, **72**:215-241.
- Garcia-Sainz JA, Vazquez-Prado J, Villalobos-Molina R: **Alpha 1-adrenoceptors: subtypes, signaling, and roles in health and disease.** *Arch Med Res* 1999, **30**:449-458.
- Varma DR, Deng XF: **Cardiovascular alpha 1-adrenoceptor subtypes: functions and signaling.** *Can J Physiol Pharmacol* 2000, **78**:267-292.
- Nichols JA, Ruffolo JRR: **Functions mediated by alpha-adrenoceptors, in Alpha-adrenoceptors: Molecular Biology, Biochemistry, and Pharmacology.** *Progress in Basic and Molecular Pharmacology*, Karger, Basel 1991:115-159.
- Tsujimoto G, Hirasawa A, Sugawara T, Awaji T: **Subtype-specific differences in subcellular localization and chlorethylclonidine inactivation of alpha1-adrenoceptors.** *Life Sci* 1998, **62**:1567-1571.
- Chalothorn D, McCune DF, Edelmann SE, Garcia-Cazarin ML, Tsujimoto G, Piascik MT: **Differences in the cellular localization and agonist-mediated internalization properties of the alpha(1)-adrenoceptor subtypes.** *Mol Pharmacol* 2002, **61**:1008-1016.
- McCune DF, Edelmann SE, Olges JR, Post GR, Waldrop BA, Waugh DJ, Perez DM, Piascik MT: **Regulation of the cellular localization and signaling properties of the alpha(1B)- and alpha(1D)-adrenoceptors by agonists and inverse agonists.** *Mol Pharmacol* 2000, **57**:659-666.
- Gobeil F, Fortier A, Zhu T, Bossolasco M, Leduc M, Grandbois M, Heveker N, Bkaily G, Chemtob S, Barbaz D: **G-protein-coupled receptors signalling at the cell nucleus: an emerging paradigm.** *Can J Physiol Pharmacol* 2006, **84**:287-297.
- Rios CD, Jordan BA, Gomes I, Devi LA: **G-protein-coupled receptor dimerization: modulation of receptor function.** *Pharmacol Ther* 2001, **92**:71-87.
- Angers S, Salahpour A, Bouvier M: **Dimerization: an emerging concept for G protein-coupled receptor ontogeny and function.** *Annu Rev Pharmacol Toxicol* 2002, **42**:409-435.
- Milligan G: **G protein-coupled receptor dimerization: function and ligand pharmacology.** *Mol Pharmacol* 2004, **66**:1-7.
- Uberti MA, Hague C, Oller H, Minneman KP, Hall RA: **Heterodimerization with beta-2-adrenergic receptors promotes surface expression and functional activity of alpha-1D-adrenergic receptors.** *J Pharmacol Exp Ther* 2005, **1**:16-23.
- Uberti MA, Hall RA, Minneman KP: **Subtype-specific dimerization of alpha 1-adrenoceptors: effects on receptor expression and pharmacological properties.** *Mol Pharmacol* 2003, **64**:1379-1390.
- Hague C, Uberti MA, Chen Z, Hall RA, Minneman KP: **Cell Surface Expression of alpha 1D-Adrenergic Receptors Is Controlled by Heterodimerization with alpha 1B-Adrenergic Receptors.** *J Biol Chem* 2004, **279**:15541-15549.
- Uberti MA, Hague C, Oller H, Minneman KP, Hall RA: **Heterodimerization with beta2-adrenergic receptors promotes surface expression and functional activity of alpha 1D-adrenergic receptors.** *J Pharmacol Exp Ther* 2005, **313**:16-23.
- Chalothorn D, McCune DF, Edelmann SE, Tobita K, Keller BB, Lasley RD, Perez DM, Tanoue A, Tsujimoto G, Post GR, Piascik MT: **Differential cardiovascular regulatory activities of the alpha 1B- and alpha 1D-adrenoceptor subtypes.** *J Pharmacol Exp Ther* 2003, **305**:1045-1053.
- Piascik MT, Guarino RD, Smith MS, Soltis EE, Saussy DL, Perez DM Jr: **The specific contribution of the novel alpha-1D adrenoceptor to the contraction of vascular smooth muscle.** *J Pharmacol Exp Ther* 1995, **275**:1583-1589.
- Hirasawa A, Sugawara T, Awaji T, Tsumaya K, Ito H, Tsujimoto G: **Subtype-specific differences in subcellular localization of alpha1-adrenoceptors: chlorethylclonidine preferentially alkylates the accessible cell surface alpha1-adrenoceptors irrespective of the subtype.** *Mol Pharmacol* 1997, **52**:764-770.
- Awaji T, Hirasawa A, Kataoka M, Shinoura H, Nakayama Y, Sugawara T, Izumi S, Tsujimoto G: **Real-time optical monitoring of ligand-mediated internalization of alpha1B-adrenoceptor with green fluorescent protein.** *Mol Endocrinol* 1998, **12**:1099-1111.
- Zhang WW, Koch PE, Roth JA: **Detection of wild-type contamination in a recombinant adenoviral preparation by PCR.** *Bio-techniques* 1995, **18**:444-447.
- Esbenshade TA, Hirasawa A, Tsujimoto G, Tanaka T, Yano J, Minneman KP, Murphy TJ: **Cloning of the human alpha 1d-adrenergic receptor and inducible expression of three human subtypes in SK-N-MC cells.** *Mol Pharmacol* 1995, **47**:977-985.
- Hrometz SL, Edelmann SE, McCune DF, Olges JR, Hadley RW, Perez DM, Piascik MT: **Expression of multiple alpha1-adrenoceptors on vascular smooth muscle: correlation with the regulation of contraction.** *J Pharmacol Exp Ther* 1999, **290**:452-463.
- Piascik MT, Hrometz SL, Edelmann SE, Guarino RD, Hadley RW, Brown RD: **Immunocytochemical localization of the alpha-1B adrenergic receptor and the contribution of this and the other subtypes to vascular smooth muscle contraction: analysis with selective ligands and antisense oligonucleotides.** *J Pharmacol Exp Ther* 1997, **283**:854-868.